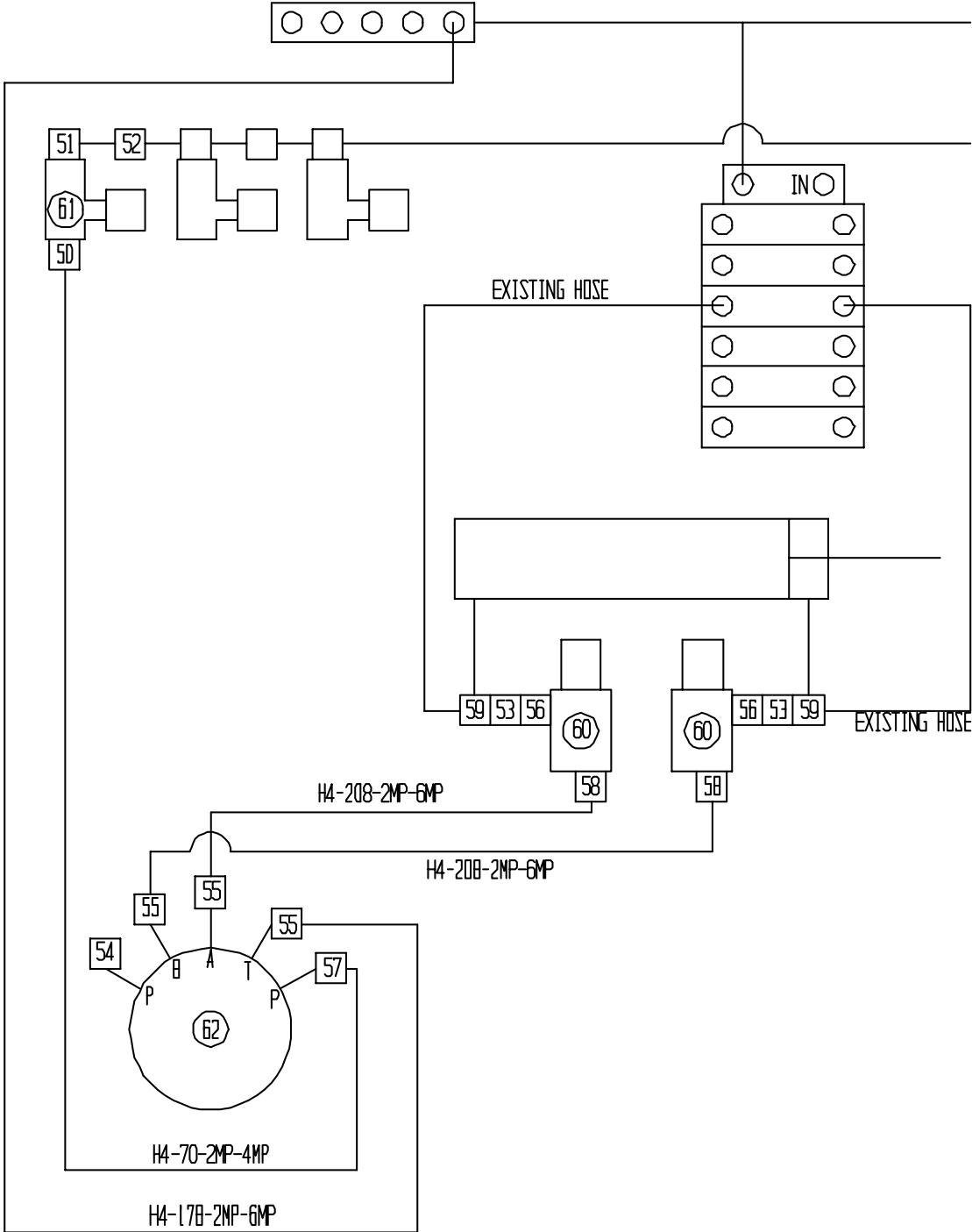


4002-15-7 Row Guidance Assembly

<u>Ref</u>	<u>Part No.</u>	<u>Description</u>	<u>Parts – Assembly</u>	<u>Will Fit SN</u>	<u>Remarks</u>
1	ADJ-0010	Adjuster, Upright, Row Guidance, Chili	2		
2	ADJ-0013	Adjuster, Row Spacing, Row Guid., Chili	1		
3	BAR-0024	Bar, Brace, Row Guidance Mount, Chili	1		
4	BAR-0025	Bar, Brace, Mount Plate to Top Header Flange	1		
5	BAR-0026	Bar, Guide, Row Guidance, Chili	2		
6	BR-062-RAK	62mm Cast Housing	2		
7	BR-125-062	Bearing, 1 1/4 Fafnir tri-seal, 62mm OD	2		
8	BRA-0047	Bracket, Row Guidance, Upper Swing, Chili	1		
9	BRA-0055	Bracket, Bearing Mount, Row Guid., Chili	1		
10	MOU-0019	Mount, Adjuster, Row Guidance, Chili	1		
11	MOU-0028	Mount, Rotary Valve, Row Guidance, Chili	1		
12	SPA-0019	Spacer, Adjuster Tube, Row Guid., Chili	1		
13	BRA-0058	Bracket, Hold Up Roller, Row Guide	1		
50	A-1404-4-4	1/4 MP x 1/4 FPX	1		
51	A-1501-4-4	1/4" MP x 1/4" FPX90	1		
52	A-5404-4	Hex Nipple 1/4"	1		
53	A-5404-6-6	Hex Nipple, 3/8" x 3/8"	2		
54	A-6408-4	4 SAE Plug	1		
55	A-6900-4-2	4 SAE x 1/8" FPX	3		
56	A-6900-8-6	8 SAE x 3/8" FPX With 7/8" Stock Body	2	20095001-	
57	A-6901-4-2	4 SAE x 1/8" FPX90 With 9/16" Body	1		
58	A-6901-8-6	8 SAE x 3/8" FPX90	2	20095001-	
59	A-6955-8-6-6	8 SAE x 3/8" FPX Tee	2		
60	HV-1977	Header Height, Leveling Circuit Valve	2		
61	HV-4-4M	Manual Metering Needle Valve	1		
62	HVR-5479	Rotary Valve, Microtorque w/ high pressure ends	1		
63	H4-178-2MP-6-MP	1/4 in hose 1/8MP x 3/8MP x 178 in long	1		
64	H4-208-2MP-6MP	1/4 in hose 1/8MP x 3/8MP x 208 in long	2		
65	H4-70-2MP-4MP	1/4 in hose 1/8MP x 1/4MP x 70 in long	1		
100	BL-5-031-SC	5/16-18 x 5/16 Knurled Point Set Screw	2		

4002-15-7 ROW GUIDANCE, HYDRAULIC SCHEMATIC



4002-15-7 ROW GUIDANCE ASSEMBLY

