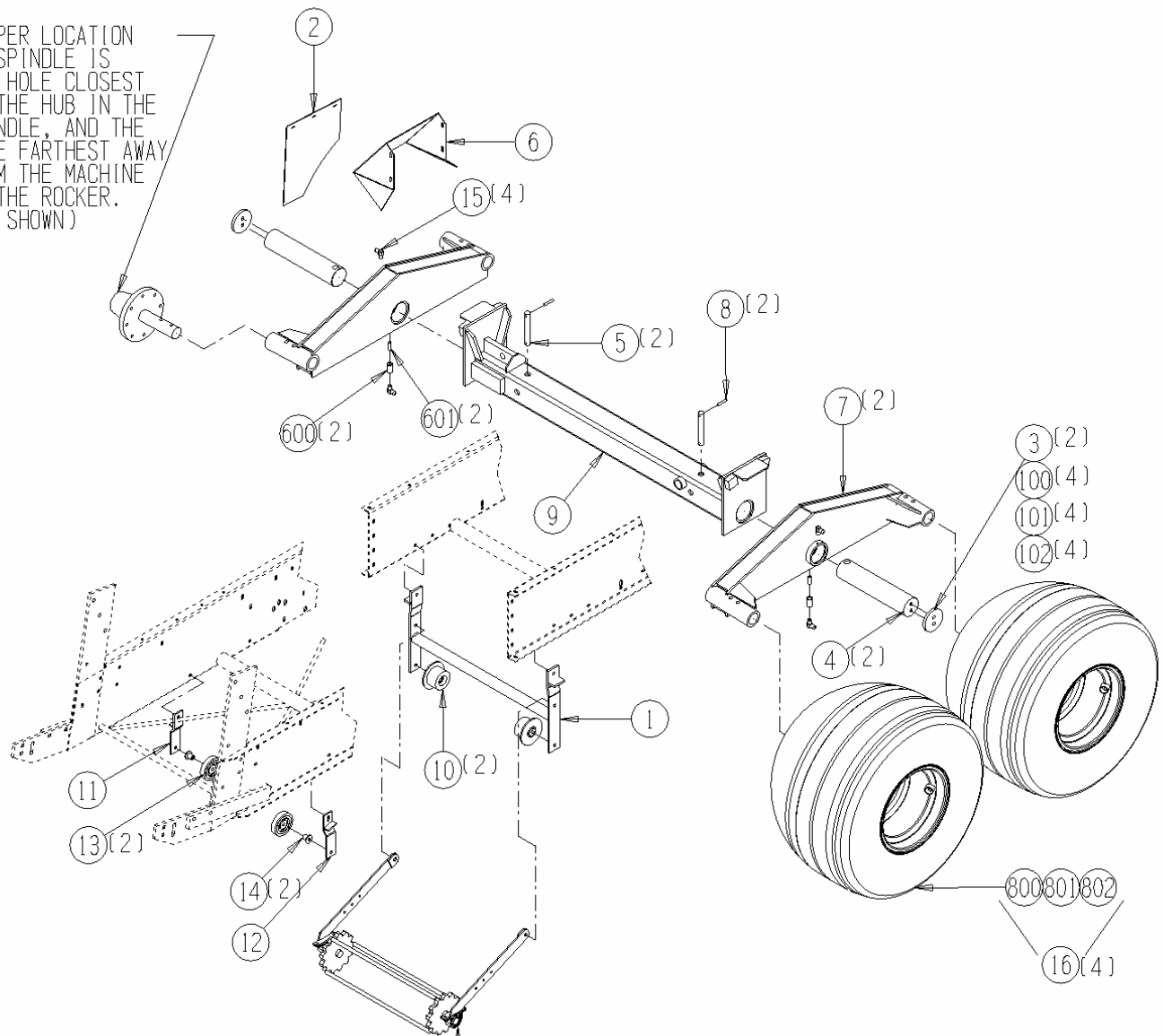


1005-1-18 Optional Big Wheels Axle Assembly

<u>Ref</u>	<u>Part No.</u>	<u>Description</u>	<u>Parts – Assembly</u>	<u>Will Fit SN</u>	<u>Remarks</u>
0	HA-9005	Primerless Threadlocker, 10ml	0.01		
1	BAR-1118	Bar, Hold up, Head Chain, Big Wheel Kit	1	KIT-1118	
2	BT-1118	Belting, Aftersort, "Big Wheel" Kit	1		
3	SUP-1121	Support, Rocker, Big Wheel (Tomato)	2	KIT-1118	
4	SFT-1118	Shaft, Rocker Mount, Big Wheel (Tomato)	2	KIT-1118	
5	PIN-1118	Pin, Shaft Holder, Big Wheel (Tomato)	2	KIT-1118	
6	COV-1118	Cover, Level Cylinder	1		
7	WHL-1121	Rocker, Big Wheel	2	WHL-1118 / WHL-1138 / WHL-1136	
8	PIN-6-32	Roll Pin 3/8" x 2"	2		
9	WHL-1118	Wheel, Axle, Big Wheel (Tomato)	1	KIT-1118	
10	RLT-535-228	5" Flange Roller 2.2WF x 3 1/2" dia, 1/2" bore	2		
11	BRA-1936	Bracket, Lower Roller for Header Chain (L.H.)	1		
12	BRA-1938	Bracket, Lower Roller for Header Chain (R.H.)	1	192-101K	
13	RLR-040-108	4" Flat Roller	2		
14	RLA-000-118	Standoff, 1/2" X 1 1/8"	2		
15	GF-1827-90	Grease Fitting 1/8 NPT x 90	4		
16	WHM-1135	Mounted 16.1 x 16.5L Traction Tire for 190's (tubeless)	4	190	
100	BL-10-150-H	5/8-11 X 1 1/2 HEX CAP G5 ZC	4		
101	BL-10-LW	5/8 SPLIT LW ZC	4		
102	BL-10-SW	5/8 SAE FW ZC @	4		
600	AC-2	1/8" NPT Coupler	2		
601	AN-2-CL	1/8" NPT Close Nipple	2		
800	WHL-1123	16.1 x 14 Big Wheel Rim for 190's	1	KIT-1118	Replaces WHL-3007 (Tomato)
801	WHT-1135	16.5L x 16.1 10 ply Traction Implement Tire	1		
802	WHT-1136	Heavy Duty Tube for 16.5L x 16.1 Tire	1		

1005-1-18 BIG WHEELS AXLE ASSEMBLY

PROPER LOCATION OF SPINDLE IS THE HOLE CLOSEST TO THE HUB IN THE SPINDLE, AND THE HOLE FARTHEST AWAY FROM THE MACHINE IN THE ROCKER. (AS SHOWN)



OPTIONAL HEADER BAR CLEANER
SEE ASSEMBLY 1005-2-6 FOR PARTS