

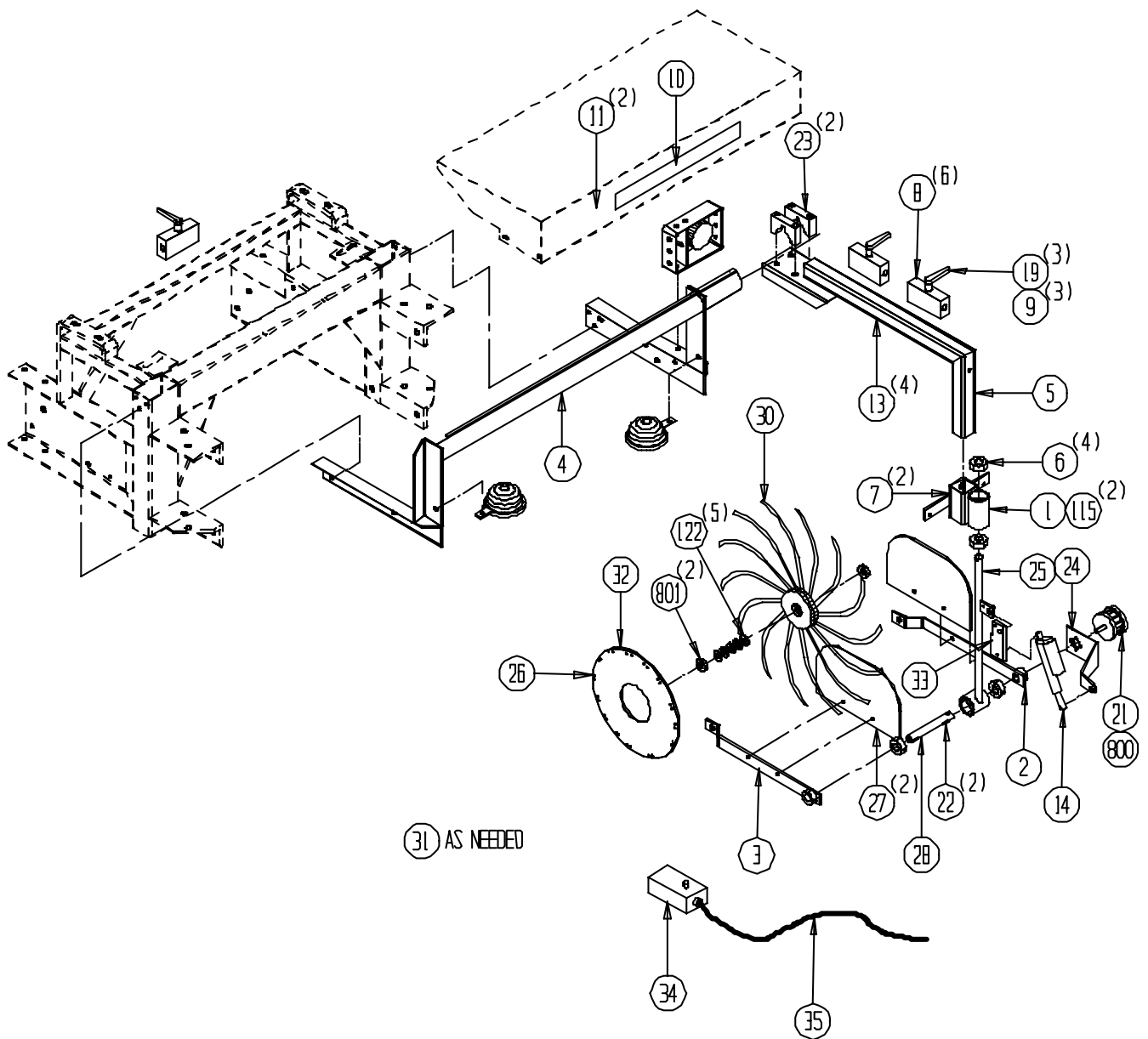
1002-15-6 Optional Header Height Control System

<u>Ref</u>	<u>Part No.</u>	<u>Description</u>	<u>Parts – Assembly</u>	<u>Will Fit SN</u>	<u>Remarks</u>
1	ADJ-HC99	Adjuster, Wheel Control Height Adj, HHC	1		
2	ARM-HC99L	Arm, Left, Control Wheel, HHC	1		
3	ARM-HC99R	Arm, Right, Control Wheel, HHC	1		
4	BAR-9022	Bar, AHHC Trailing Wheel Mount, Support Bar	1		
5	BAR-9023	Bar, AHHC Trailing Wheel Mount, Tomato	1		
6	BR-100-ER	Bearing, 1" ER	4		
7	CH-3-28	3/16 LINK CHAIN 28 LINKS	2		
8	CL-44	3" SS GEAR CLAMP	6		
9	DC-1047	Decal, HV-1047, White	3		Use w/HV-1047
10	DC-1184	Danger Decal, 3" x 16"	1		
11	DC-ARROW	Decal, Yellow Direction Arrow	2		
12	PR34896	Hose Clamp, 1/4" Hydraulic, 1/2" O.D. Hose	7		
13	HA-1031	Hydraulic Hose Holder 3/8	4		
14	ACT-042-28	Actuator, Single Control, 28' Lead	1		
15	HC-1129-A	Hyd. Cyl Pin, 1" x 2 3/4" Between the Grooves	4		
16	HC-1130B	Hair Pin Clip	8		
17	HC-175-0808-1	Hydraulic Cylinder, 1 3/4" x 8", #8 SAE Ports	1		
18	HC-200-0808-1	Hydraulic Cylinder, 2" x 8", #8 SAE Ports	1		
19	HV-1047	Ball Valve	3		
20	HV-4-4M	Manual Metering Needle Valve	1		
21	HVR-5479	Rotary Valve, Microtorque w/ high pressure ends	1		
22	KEY-4-4-12	SHAFT KEY 1/4"x3/4" SQUARE CUT (1018)	2		
23	MOU-103	Mount, Wheel Arm Bar Support, HHC, Cuc & Tom	2		
24	MOU-5478	Mount, Roto Valve Actuator, Header Height Control	1		
25	MOU-HC99	Mount, Trailing Wheel Arm, HHC	1		
26	PL-6192	Depth Disk Wheel, 14.375 Dia.	1		
27	PL-HC99	Plastic, Chain Guard Wheel Arm, HHC	2		
28	SFT-HC99	Shaft, Wheel Arm Mounts, HHC	1		
30	WHL-HHC-99	Spider Wheel Assembly	1		
31	WT-14	Wire Tie 14 1/4"	25		
32	WT-7	Wire Tie 7"	25		
33	MOU-5479	Mount, Actuator, Header Height Control	1		
34	EL-0007	Actuator Control Box, Single	1		

35	ELC-0009	Actuator Cord, Control Box-#1 Junction Box	1
100	BL-1224-087-DT	12-24 x 3/4 Drill and Tap Screw	2
101	BL-4-050-H	1/4-20 X 1/2 HEX CAP G5 ZC	4
102	BL-4-100-H	1/4-20 X 1 HEX CAP G5 ZC	4
103	BL-4-125-H	1/4-20 X 1 1/4 HEX CAP G5 ZC	2
104	BL-4-175-H	1/4-20 X 1 3/4 HEX CAP G5 ZC	1
105	BL-4-400-H	1/4-20 X 4 HEX CAP G5 ZC	4
106	BL-4-FW-8	1/4" Flat Washer Grade 8	12
107	BL-4-LN	1/4-20 HEX LN NE ZC	11
108	BL-4-LW	1/4 SPLIT LW ZC	4
109	BL-5-031-SC	5/16-18 x 5/16 Knurled Point Set Screw	8
110	BL-6-100-H	3/8 UNC X 1 HH C/S BOLT GR5 ZINC	4
111	BL-6-125-H	3/8-16 X 1 1/4 HHCS G5 ZC	4
112	BL-6-LN	3/8 UNC FIN HEX LOCK NUT NE A563 GrA ZINC	4
113	BL-6-LW	3/8 SPLIT LW ZC	4
114	BL-6-SW-8	3/8 SAE FW G8 ,Yellow Zinc, Thru Hardened	14
115	BL-8-100-SQSS	1/2 x 1 Square Head Set Screw (USS)	2
116	BL-8-475-H	1/2-13 X 4 3/4 HEX CAP G5 ZC	4
117	BL-8-FW-8	1/2 FLAT WASHER G8 ZC	4
118	BL-8-LN	1/2-13 HEX LOCK NUT NYLON INSERT ZC	4
119	BL-8-SW-8	1/2 SAE FW G8 ZC	4
120	BL-10-325-H	5/8 UNC X 3 1/4 HH C/S BOLT GR ZINC	1
121	BL-10-LN	5/8-11 HEX LN NE ZC	1
122	BL-10-SM	5/8 x 1 x 14ga Shim	5
123	BL-10-SW	5/8 SAE FW ZC @	5
124	RI-3-6-P	Pop Rivets 3/16 x 3/8 Domed, .375 head, ea.	15
600	A-1501-6-6	3/8" MP x 3/8" FPX90	2
601	A-1601-8-8-8	1/2 MP x 1/2 FPX x 1/2 FPX Tee	2
602	A-5404-8-4	Hex Nipple 1/2" x 1/4"	1
603	A-5405-4-6	Pipe Adapter 3/8 FPT x 1/4 MPT	1
604	A-6408-4	4 SAE Plug	1
605	A-6900-4-2	4 SAE x 1/8" FPX	3
606	A-6901-4-2	4 SAE x 1/8" FPX90 With 9/16" Body	1
607	A-6955-8-6-6	8 SAE x 3/8" FPX Tee	4
608	AB-8-6	1/2 X 3/8 Bushing	1
609	H4-112-6MP-6MP	1/4 IN HOSE 3/8MP x 3/8MP x 112 LONG	1
610	H4-29-6MP-6MP	1/4 in. hose 3/8MP x 3/8MP x 29 in long	2

611	H4-344-2MP-6MP	1/4 in hose 1/8mp x 3/8mp x 344 long	1	
612	H4-353-2MP-6MP	1/4 in hose 1/8mp x 3/8mp x 353 long	1	
613	H4-36-2MP-6MP	1/4 IN HOSE 1/8MP x 3/8MP x 36 LONG	1	
614	H4-46-2MP-6MP	1/4 IN HOSE 1/8MP x 3/8MP x 46 LONG	1	
615	H4-94-6MP-6MP	1/4 in hose 3/8MP x 3/8MP x 94 in long	1	
800	HVR-5479-RB	Microtorque Valve, Rebuilt	1	Contact Pik-Rite Dealer for Details on "Rebuild" Program.
801	WHL-200-C	Wheel Bearing, 5/8" Bore	2	

1002-15-6 OPTIONAL AUTO HEADER HEIGHT CONTROL ASSEMBLY



1002-15-6 OPTIONAL HEADER HEIGHT CONTROL HYDRAULICS

